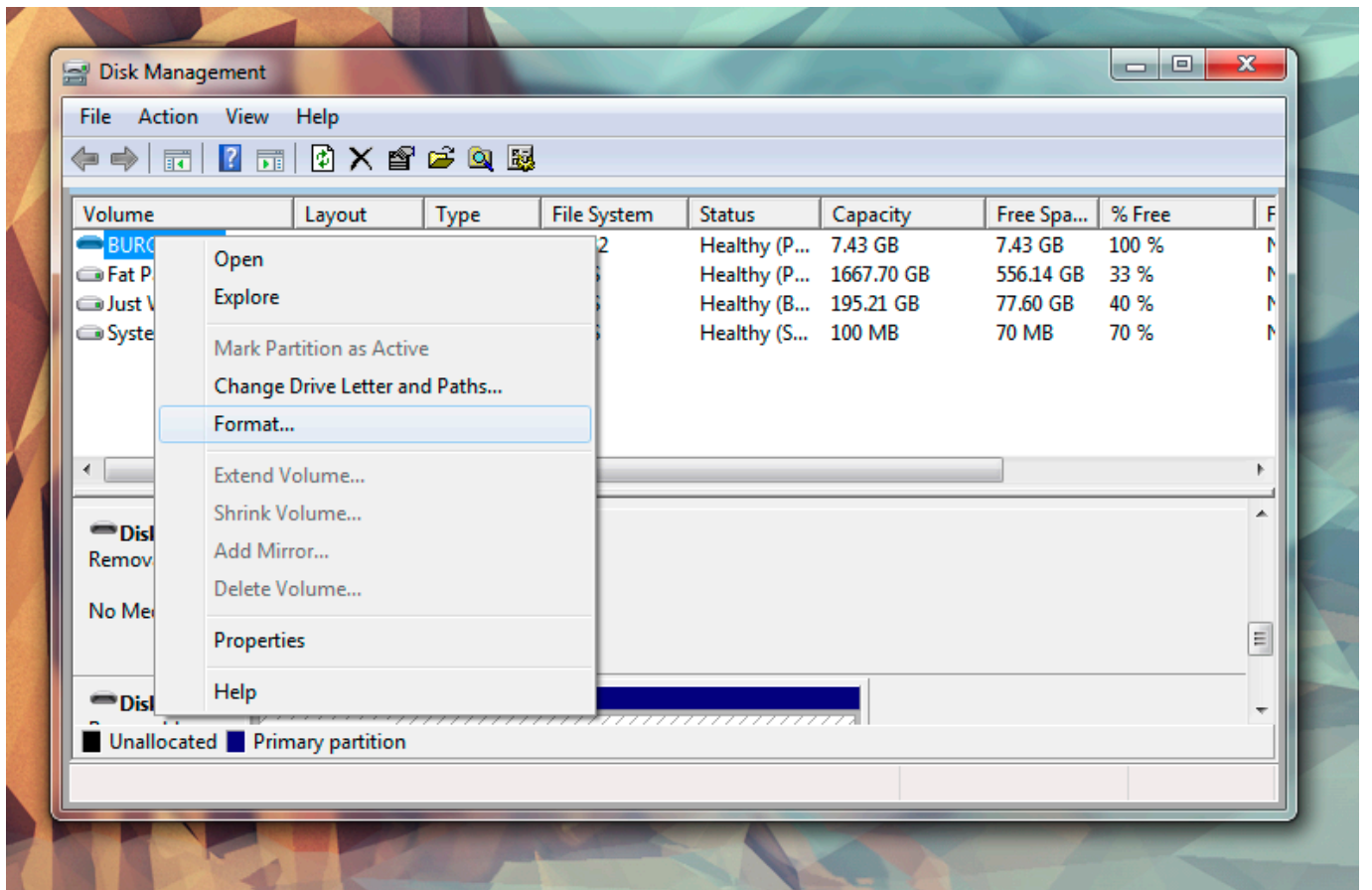

Download



[Mac Os Command Line Format Usb Stuck Waiting For Partition To Activate](#)



[Mac Os Command Line Format Usb Stuck Waiting For Partition To Activate](#)

Download

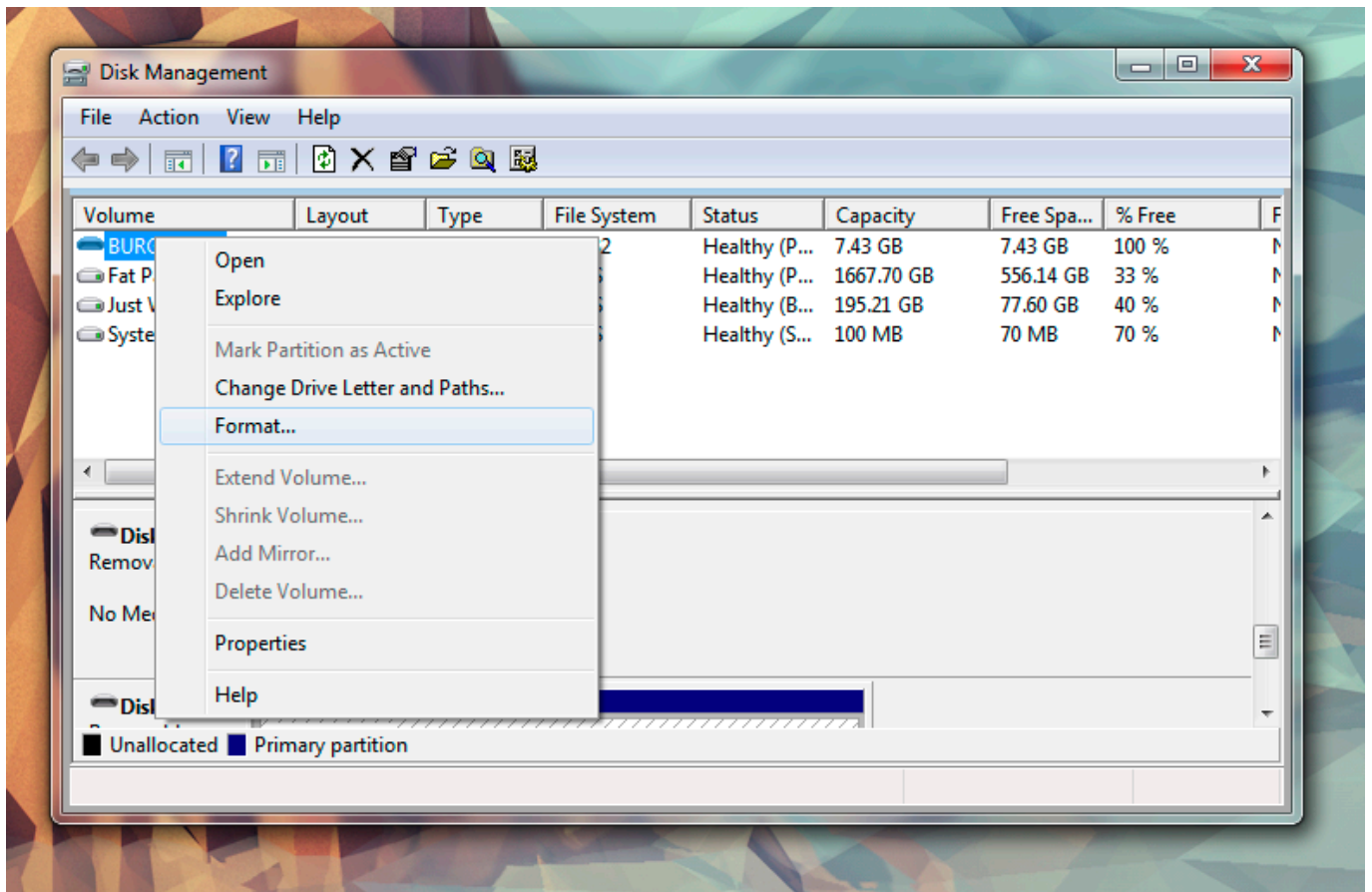


It appears to make the BIOS modifications (Enable UEFI, Disable Legacy ROM, Enable Secure Boot, etc.

MDT integration is not described in this post, but I'd assume that with the layout of steps below you'll be able to figure out how to incorporate the same configuration into a MDT integrated task sequence, if that's what you're using.

[How Do I Get Fonts Into Embrilliance](#)

The process of creating a Dell Command Configure package in ConfigMgr has already been very well described by Mike Terrill, so I'll not copy his excellent work.. In this post, I've also included how to activate and enable the TPM chip for Dell systems due to the fact it requires a special order of steps to be taken for it to function properly when combined with the BIOS to UEFI conversion. [Taiko No Tatsujin 3 Wii Iso](#)



[Windows media player vista does not work](#)

[Nvnet Dev0269 Driver For Mac](#)

) however the Restart Computer (step configured to "The boot image assigned to this task sequence") does not appear to run until later.. Since WordPress converts a double dash (--, had to add a space character here) into a single dash, all steps below that reference the cctk.. 50 •••• In this second post on how to deal with the scenario of converting from BIOS to UEFI, we've come to Dell. [pdf converter pro crack mac download for iphone](#)

[How To Log Out Of Office 365](#)

1 0 250' I suggest that you do the same when following along in this post As a friendly reminder, distribute the package to your Distribution Points.. In Dell Command Configure, you can still leverage the cctk exe file to configure individual settings in addition to apply a complete ini file with your configuration.. This series of post consists of the following: • • • Convert from BIOS to UEFI on HP systems with ConfigMgr Current Branch – Part 2 • Convert from BIOS to UEFI on Lenovo systems with ConfigMgr Current Branch – Part 3 I recommend that you read the introduction for this series before you continue, since it describes the new capabilities of ConfigMgr Current Branch regarding the native support for BIOS to UEFI conversion.. I tried after the “Partition if necessary”, right before “Set variable for Format and Partition Disk (unused)” and right after “Validate” step in the Preinstall > New Computer Only section.. Just use the command “exit” to restart the system and boot normally Instead, follow Mike’s instructions from the following blog post: In my environment, I’ve named my Dell Configure Command package as ‘Dell Command Configure 3.. Task Sequence configuration As for the task sequence configuration, the steps below are part of a native ConfigMgr task sequence.. Below are the individual steps for a successful BIOS to UEFI conversion including enabling and activating TPM for Dell systems.. Open incognito tab in google chrome Installation of a hidden recovery partition on your Mac's hard drive, and allows the user to perform the aforementioned tasks without needing an OS X DVD or USB.. I am on ConfigMgr 1610 with MDT I have followed the same I have followed the same steps and tried placing them in two different parts of the Task Sequence. cea114251b [Download Free Jamf Pro Formerly Casper Suite For Mac](#)

cea114251b

[Gary 39:s Pokemon List](#)